

Aline *Accessories*

**YOUR SOURCE
FOR QUALITY WASHROOM ACCESSORIES
AND RESTAURANT EQUIPMENT**



Full Line of: Soap Dispensers • Roll Towel Dispensers • Center Pull Towel Dispenser • Toilet Tissue Dispensers
Tissue Dispenser • Folded Towel Dispensers • Sanitary Napkin Receptacles • Cup Dispensers • And More

1800-601-1133 • WWW.ALINEACCESSORIES.COM

CLASSIC ROLL TISSUE HOLDER



RT-1 - Single Roll

- Pilfer proof locking mechanism
- Tension spring prevents free rolling

Size: W6" x H23"/4 x D4" Finish: Chrome



RT-2 - Double Roll

Size: W11" x H23" / D4" Finish: Chrome

PREMIUM ROLL TISSUE HOLDER



R-27 - Single Roll

- Spindle is fabricated of abs plastic and is designed for controlled delivery
- Cast aluminum with satin finish
- Equipped with spring lock to prevent theft of roll

Size: W10½" x H23" x D4" Finish: Cast Aluminum



R-227 - Double Roll

Size: W13" x H13¼" x D4" Finish: Cast Aluminum

DELUXE ROLL TISSUE HOLDER



RT-11 - Single Roll

- Concealed hinge button behind roll
- Tension spring prevents free rolling

Size: W5½" x H231/8" /4 x D4¼" Finish: Chrome



RT-12 - Double Roll

Size: W10½" x H231/8" /4 x D4¼" Finish: Chrome

SINGLE ROLL TISSUE HOLDER



RT-28 - Single Roll

- Pilfer proof for high vandal areas. Made of epoxy coated aluminum. Must finish roll before being able to remove roll

Size: W5¼" x H2"/4 x D3" Finish: Aluminum

FOUR STATION ROLL TISSUE HOLDER



RT-44

- Ease loading fully enclosed for maximum hygiene
- Transparent plastic cover shows roll status
- Made of high impact plastic
- Roll advance mechanism

Size: W13.11" x H15" x D6"

DUAL ROLL TISSUE DISPENSER



DR-30

- Surface mount fabricated of 18 gauge stainless steel with satin finish front panel is hinged at bottom and secured with a tumbler lock designed to hold 2 standard roll. Extra roll will automatically drop in place after first roll is depleted

Size: W6" x H12" x D6½" Finish: Stainless Steel

INTERFOLD TISSUE CABINET



X2-W

- Will hold single fold and double fold toilet tissue

Size: W8¼" x H5" x D3" Finish: White Enamel

X2-C

Size: W8¼" x H5" x D3" Finish: Bright Chrome

X2-SS

Size: W8¼" x H5" x D3" Finish: Stainless Steel

FACIAL TISSUE DISPENSER



140

- Surface mounted.
- Front cover fits over back unit which is mounted to wall dispenses single ply or double ply tissues

Size: W10⅝" x H5½" x D5" Finish: Chrome

JUNIOR / JUMBO ROLL TISSUE PLASTIC DISPENSERS



JR1-SP - For 9" junior roll

- Made of High impact plastic with smoked front
- Holds one 9" roll

Size: W10³/₄" x H12" x D5¹/₈"

JR2-SP - For 12" jumbo roll

- Made of High impact plastic with smoked front
- Holds one 12" roll

Size: W14¹/₈" x H15" x D5¹/₈"

JR3-SP - For 12" double roll

- Made of High impact plastic with smoked front
- Holds two 9" rolls

Size: W19³/₈" x H11" x D5¹/₈"

JUNIOR /JUMBO STUB ROLL TISSUE PLASTIC DISPENSERS



JR11-SP - For 9" junior roll

- Holds one 9" roll and one stub roll
- Made of high impact plastic
- Transparent cover to show roll status

Size: W16" x H11¹/₂" x D4³/₄"

JR12-SP - For 12" jumbo roll

- Holds one 12" roll and one stub roll
- Made of high impact plastic
- Transparent cover to show roll status

Size: W19" x H15¹/₂" x D4³/₄"

JUNIOR / JUMBO ROLL TISSUE STEEL DISPENSERS



JR-31 - For Junior 9" Roll

- Junior 9" roll tissue dispenser
- See thru slot indicator

Size: W14" x H14" x D4½" Finish: White Enamel

JR-31-SS

Size: W14" x H14" x D4½" Finish: Satin Stainless Steel



JR-32 - For Jumbo 12" Roll

- Jumbo 12" roll tissue dispenser
- See thru slot indicator

Size: W14" x H14" x D4½" Finish: White Enamel

JR-32-SS

- Stainless steel satin finish for One 12" roll of tissue

Size: W14" x H14" x D4½" Finish: Satin Stainless Steel



JR-33-SS

- Double roll Junior tissue dispenser
- Holds two 9" rolls has viewing slot for roll status

Size: W19¾" x H10½" x D5" Finish: Satin Stainless Steel

TOILET SEAT COVER DISPENSERS



145-W - For Half fold covers

- Surface mounted. Dispenses 250 paper seat covers

Size: W15¾" x H11" x D1⅞" Finish: Chrome

145-C

Size: W15¾" x H11" x D1⅞" Finish: White Matel

145-SS

Size: W15¾" x H11" x D1⅞" Finish: Stainless Steel

145-P

Size: W15¾" x H11" x D1⅞" Finish: White Plastic

146-P - For Quarter fold covers

- Seat Cover Quarter fold dispenser. Surface mounted.

Size: W 8⅝" x H 12¼" x D 2⅞"

ELECTRONIC ROLL TOWEL DISPENSER



RC-350

- Features a battery operated roll towel disp. Will hold up to up to 8" diameter rolls has a stub roll transfer system also has a push bar when batteries are dead ada compliant made of transparent plastic to show roll status

Size: W107/8" x H15½" x D9"

MECHANICAL HANDS FREE TOWER DISPENSER



RC-220

- Features a no touch dispensing no lever no cranks.
- Fits up to 8" In diameter rolls has a stub roll transfer system
- Transparent to show roll status
- Dispenser pre measured sheets

Size: W107/8" x H15½" x D9"

LEVER ROLL TOWEL DISPENSER



RC-218

- Features a lever to dispense roll towels up to 8" in diameter
- Transparent cover to show roll status no stub roll

Size: W10½" x H12¾" x D9½"

PUSH BAR ROLL TOWEL DISPENSER



RC-225

- Features a push bar to dispense roll towels up to 8" in diameter
- Transparent cover to show roll status stub roll transfer system ADA compliant

Size: W107/8" x H15½" x D9"

PULL AND TEAR TOWEL DISPENSER



RC-228

- Hygienic no touch dispensing for up to 8 1/2 roll towels
- Easy loading
- Transparent cover to show roll status

Size: W9¾" x H13" x D9¼"

METAL ROLL TOWEL DISPENSER WITH CRANK

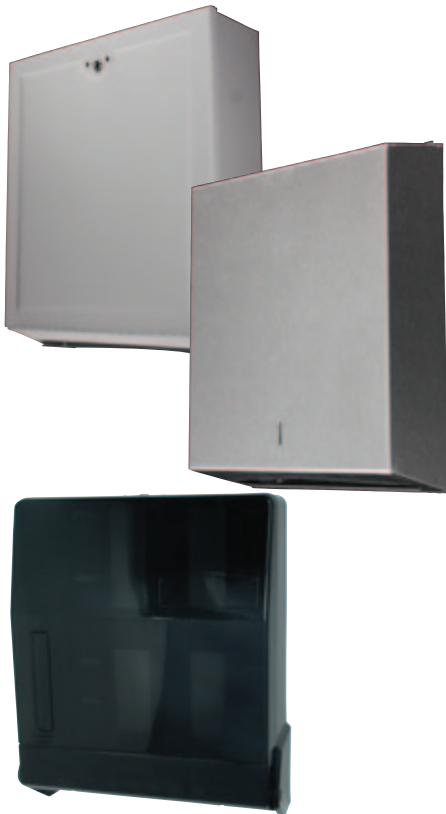


RC-200

- Made of white enamel baked metal dispenser up to 81/2 in diameter roll towel view slot for roll status especially good for high vandal areas

Size: W9³/₄" x H11" x D6³/₄" Finish: White Enamel

C-FOLD AND MULTIFOLD TOWEL DISPENSER



C-200-W

- Surface mounted with self-closing lock and view slots.
- Constructed of 20 gauge steel with white baked enamel finish.
- Capacity: 300 C-fold or 500 multifold towels.

Size: W11" x H15" x D4" Finish: White Enamel

C-200-C

Size: W11" x H15" x D4" Finish: Chrome

C-200-SS

Size: W11" x H15" x D4" Finish: Satin Stainless Steel

C-200-P

- C-fold multi fold towel dispenser
- Made of high impact plastic
- Double latch key lock for safety. Surface mounted.

Size: W11" x H15¹/₄" x D5" Finish: Plastic

REDUCED CAPACITY HALF FOLD / C-FOLD / MULTI FOLD TOWEL DISPENSER



C-201-P

- Half fold C-fold- multi fold towel dispenser
- Made of high impact plastic
- Double latch key lock for safety.

Size: W11" x H8 ¹/₄" x D3 ³/₄" Finish: Plastic

C-201-SS

Size: W11" x H8 ¹/₄" x D3 ³/₄" Finish: Stainless Steel

SINGLE-FOLD PAPER TOWEL DISPENSER



B-200-W

- Surface mounted with self-closing lock and view slots.
- Constructed of 20 gauge steel with white baked enamel finish.
- Capacity: 500 single-fold towels.

Size: W11 ½" x H7 ½" x D6 ½"

Finish: White Matel

B-200-C

Size: W11 ½" x H7 ½" x D6 ½"

Finish: Chrome

B-200-SS

Size: W11 ½" x H7 ½" x D6 ½"

Finish: Stainless Steel

STANDARD CENTER-PULL TOWEL DISPENSER



CP-51

- Made of high impact plastic
- Smoked cover for easy viewing.
- Accommodated 8"-10" standard center-pull towel rolls.

Size: W4 ½" x H7 ⅞" x D4 ⅝"

Finish: Plastic

NAPKIN DISPENSER



HN-P

- Tall fold napkin dispenser
- Made of high impact plastic
- Spring loaded plate for easy dispensing

Size: 3 ¾"W x 7 ¼"H x 4 ¼"D

LN-P

- Low fold napkin dispenser
- Made of high impact plastic
- Spring loaded plate for easy dispensing

Size: 3 ¾"W x 5"H x 4 ¼"D

LIQUID SOAP DISPENSER



S-101-V

- Surface Mounted Vertical Liquid Soap Dispenser 40 oz.
- Fabricated of Type 304 stainless steel with satin finish.
- Clear plastic level indicator and all purpose soap valve.

Size: W3 3/4" x H8 1/4" x D2 3/4"

Finish: Stainless Steel

S-102-H

- Surface Mounted Horizontal Liquid Soap Dispenser

Size: W3 3/4" x H8 1/4" x D2 3/4"

Finish: Stainless Steel

LIQUID SOAP DISPENSER



S-17

- Surface Mounted. Fabricated of chrome plated brass with removable glass globe. 12 oz.

Size: W3 3/16" x H6" x D6 1/8"

Finish: Brass

POWDER SOAP DISPENSER



S-700

- Surface mounted powder soap dispenser.
- Polished stainless steel. 32 oz.

Size: W4 1/2" x H7 1/8" x D4 5/8"

Finish: Stainless Steel

LIQUID SOAP DISPENSER



SD-500

- Push-up type liquid soap dispenser - 16 oz.

Size: 7" Overall Height

Finish: Chrome

S-80

- Surface mounted liquid soap dispenser. - 16 oz.

LAVATORY MOUNTED LIQUID SOAP DISPENSER



S-28

- Push down valve dispenses any liquid soap. - 32 oz.
- Removable spout and plunger allows filling from the top.
- Requires 1" diameter mounting hole.

Size: W3 3/16" x H6" x D6 1/8" Finish: Brass

BULK SOAP DISPENSER



SD-170

- Heavy-duty ABS plastic construction, versatile push plunger valve, removable lid. Easy installation.
- Dispenser slides onto plate which is screwed onto the wall. Standard color is white plastic with transparent smoked reservoir. Available in different colors.

Size: 9"H x 6"W x 3"D

Capacity: 40 oz.

SD-171

- Single Compartment Soap Dispenser
- One 20 oz. tank.

9"H x 3"W x 3"D

SD-172

- Two Compartment Plastic Soap Dispenser
- Two 20 oz. tanks.

Size: 9"H x 6"W x 3"D

SHOWER ORGANIZER DISPENSER



SD-181

- One Compartment Shower Organizer Dispenser
- Shower organizer eliminates bathtub mess.
- Neat and durable with push button convenience.
- Easy to refill. Quick installation. Holds one 12 oz. bottle.

Size: 10 1/2"H x 2 3/4"W x 4"D

SD-182

- Two Compartment Shower Organizer Dispenser
- Same as SD-181. Holds two 12 oz. bottles.

Size: 10 1/2"H x 5"W x 4"D

SD-183

- Three Compartment Shower Organizer Dispenser
- Same as SD-181. Holds three 12 oz. bottles.

Size: 10 1/2"H x 7 3/4"W x 4"D

ADJUSTABLE STAINLESS STEEL CUP DISPENSER



510 Adjusts for hot or cold cups for 3 to 6 ounces

Size: 15 3/4" H Cup Brim Dia. 2" to 2 3/4" **Finish:** Stainless Steel

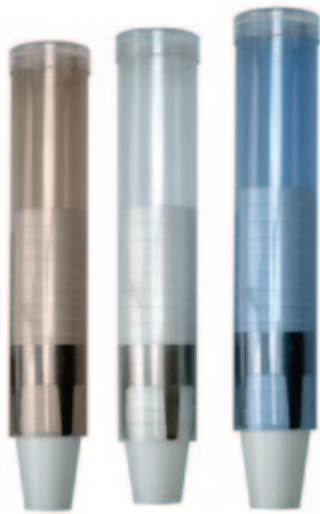
515 For 6 to 10 ounce cold cups.

Size: 17 1/4" H Cup Brim Dia. 2 5/8" to 3 1/8" **Finish:** Stainless Steel

520 For 6 to 10 ounce hot cups

Size: 23 1/8" H Cup Brim Dia. 2 3/4" to 3 3/8" **Finish:** Stainless Steel

ADJUSTABLE PLASTIC CUP DISPENSER



515-CLR

• Clear plastic cup dispenser for 6 to 10 ounce cold cups.

Size: 17 1/4" H Cup Brim Dia. 2 5/8" to 3 1/8"

515-SP

• Smoked plastic cup dispenser for 6 to 10 ounce cold cups.

Size: 17 1/4" H Cup Brim Dia. 2 5/8" to 3 1/8"

515-BP

• Blue plastic cup dispenser for 6 to 10 ounce cold cups.

Size: 17 1/4" H Cup Brim Dia. 2 5/8" to 3 1/8"

SANITARY NAPKIN RECEPTACLE



250-W

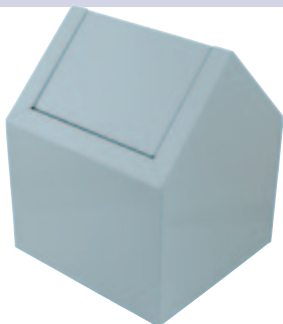
• Surface mounted. Flip top lid for easy use.
Deodorant compartment.

Size: 8"W x 11 1/4"H x 4"D **Finish:** White Enamel

250-C

Size: 8"W x 11 1/4"H x 4"D **Finish:** Chrome

SANITARY NAPKIN DISPOSAL



K-100

• Floor model. The perfect solution for the disposal of sanitary napkins. Two self closing doors, each operating independently of the other to enable use between two stalls. Large capacity plastic liner bucket with handle for easy handling and cleanup.

Size: 9"W x 9"H x 11 1/2"D **Finish:** White Enamel



A Line Accessories, Inc. is a leading manufacturer in dispensers, bathroom, washroom and hotel accessories, and restaurant equipment. We offer a line of products that insures the customer of top quality, durability, and first in design.

Our staff of designers and engineers is always on the lookout to enhance and update our products to the latest design and encore.

We keep our 60,000 square ft. warehouse fully stocked to accommodate large orders and to ensure earliest shipping.



**P.O. BOX 457,
HIGHLAND MILLS, NEW YORK 10930**

TOLL FREE: 1800-601-1133

TEL: 845-774-1122

FAX: 845-782-3283

EMAIL: INFO@ALINEACCESSORIES.COM

WEBSITE: WWW.ALINEACCESSORIES.COM